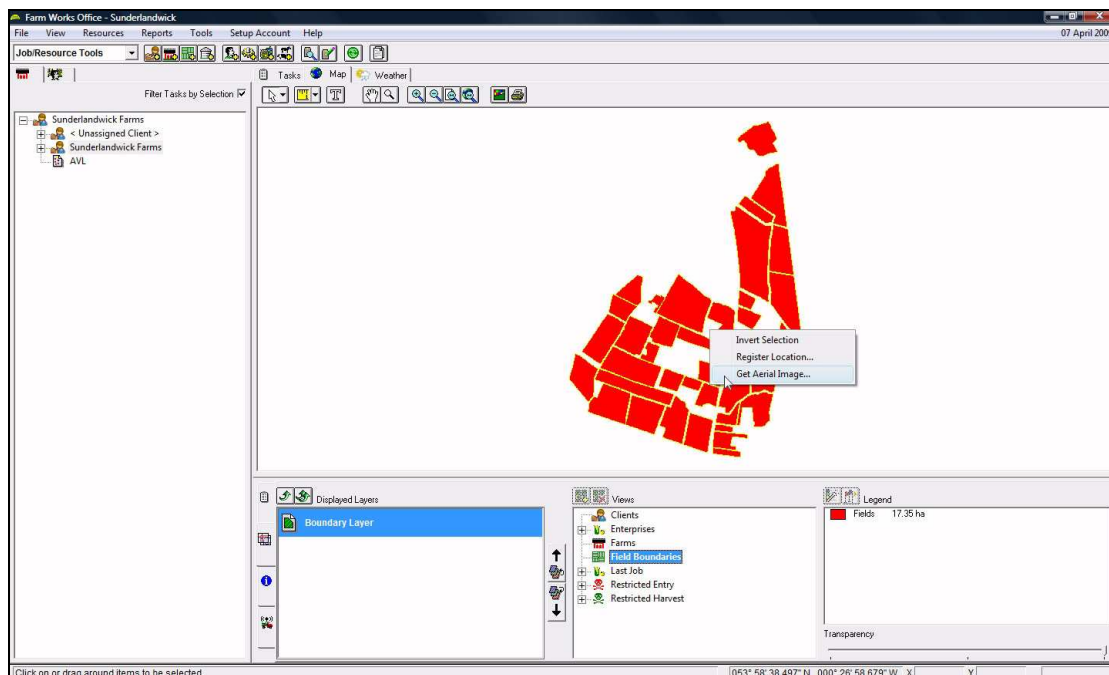


USING THE *GET AERIAL IMAGE* FEATURE TO DOWNLOAD A GOOGLE EARTH IMAGE TO YOUR PROJECT

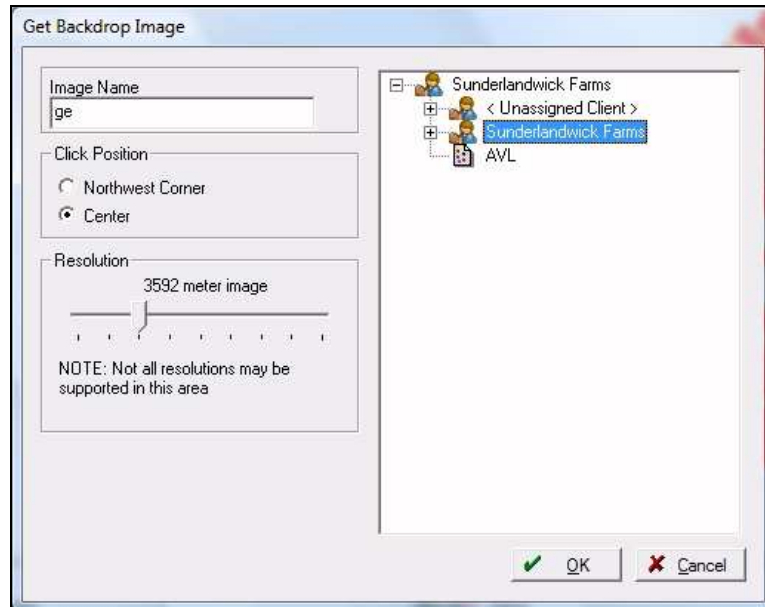
It is easier to use this feature if you already have some form of map or point data in your project, or available to import, but this is not necessary. Pre-existing data may be a government map, Site Mate log, yield or sensor file, for example.

1. Right-click a point on the Map area of your screen and select the *Get Aerial Image* option. This point will be the basis for either the centre or North West point of the Google Earth image (you will have the option to choose)



2. The *Get Backdrop Image* box will appear. Enter a description for the Image Name and choose the positional orientation (based on where you clicked). Resolution will produce sharper images at smaller metre settings, decreasing as the image area

increases. Finally, choose the part of your project tree structure you wish the layer to be loaded to, ie under Client, Farm, Field or Enterprise



3. The image will appear after a short delay. Repeat where required, ie multiple smaller, clearer images.

